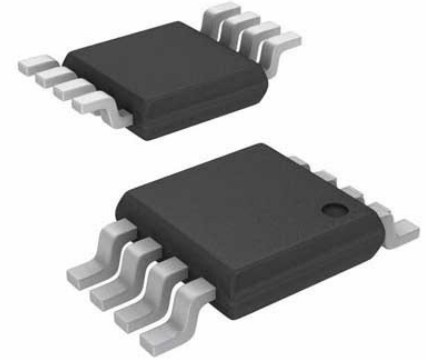


Conv DC-DC 3.6V to 36V Step Down Single-Out 0.78V to 33.84V 1.2A Automotive 8-Pin MSOP EP Tube

Manufacturers	<a href="#">Analog Devices, Inc</a>
Package/Case	MSOP-8
Product Type	Power Management ICs
RoHS	Pb-free Halide free
Lifecycle	



Images are for reference only

Please submit RFQ for LT3505EMS8E#PBF or [Email to us: sales@ovaga.com](mailto:sales@ovaga.com) We will contact you in 12 hours.

[RFQ](#)

## General Description

The LT3505 is a current mode PWM step-down DC/DC converter with an internal 1.4A power switch. The wide operating input range of 3.6V to 36V (40V maximum) makes the LT3505 ideal for regulating power from a wide variety of sources, including unregulated wall transformers, 24V industrial supplies and automotive batteries. The oscillator can be programmed for high frequency operation allowing the use of tiny, low cost external components or it can be programmed for lower frequency operation to maximize efficiency.

Cycle-by-cycle current limit provides protection against shorted outputs and soft-start eliminates input current surge during start-up. The low current (<math><2\mu\text{A}</math>) shutdown mode provides output disconnect, enabling easy power management in battery-powered systems.

## Features

Wide Input Range: 3.6V to 36V Operating, 40V Maximum

Up to 1.2A Output Current

Resistor-Programmable Fixed-Frequency Operation from 200kHz to 3MHz

Output Adjustable Down to 780mV

Short-Circuit Robust

Uses Tiny Capacitors and Inductors

Soft-Start

Low Shutdown Current: <2 $\mu$ A

Low VCESAT Switch: 350mV at 1A

Thermally Enhanced, Low Profile 3mm x 3mm DFN-8 and MSOP-8 Packages

## Application

Automotive Battery Regulation

Industrial Control Supplies

Wall Transformer Regulation

Distributed Supply Regulation

Battery-Powered Equipment

## Related Products



### [LT3763EFE](#)

Analog Devices, Inc  
TSSOP28



### [LTC4417IUF](#)

Analog Devices, Inc  
QFN-24



### [LTC1966CMS8#PBF](#)

Analog Devices, Inc  
MSOP-8P



### [LTM8045EY#PBF](#)

Analog Devices, Inc  
BGA40



### [LT1038CK](#)

Analog Devices, Inc  
TO-3



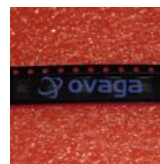
### [LTC3440EMS](#)

Analog Devices, Inc  
MSOP10



### [LTC2990IMS#PBF](#)

Analog Devices, Inc  
10MSOP



### [LT4295IUFD#PBF](#)

Analog Devices, Inc  
28-WFQFN