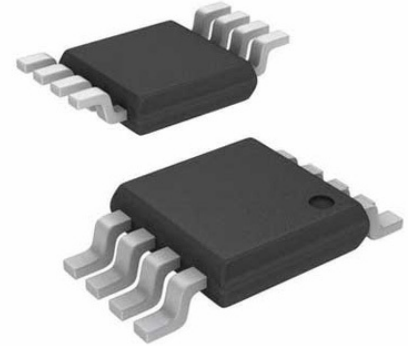


LINEAR TECHNOLOGY LTC1967IMS8#PBF RMS to DC Converter, 0.1%, 40kHz, -40°C, 85°C, MSOP, 8Pins

Manufacturers	<a href="#">Analog Devices, Inc</a>
Package/Case	8-TSSOP, 8-MSOP (0.118, 3.00mm Width)
Product Type	PMIC - RMS to DC Converters
RoHS	Pb-free Halide free
Lifecycle	



Images are for reference only

Please submit RFQ for LTC1967IMS8#PBF or [Email to us: sales@ovaga.com](mailto:sales@ovaga.com) We will contact you in 12 hours.

[RFQ](#)

## General Description

The LTC1967 is a true RMS-to-DC converter that uses an innovative delta-sigma computational technique. The benefits of the LTC1967 proprietary architecture when compared to conventional log-antilog RMS-to-DC converters are higher linearity and accuracy, bandwidth independent of amplitude and improved temperature behavior.

The LTC1967 operates with single-ended or differential input signals (for EMI/RFI rejection) and supports crest factors up to 4. Common mode input range is rail-to-rail. Differential input range is 1VPEAK, and offers unprecedented linearity. The LTC1967 allows hassle-free system calibration at any input voltage.

The LTC1967 has a rail-to-rail output with a separate output reference pin providing flexible level shifting; it operates on a single power supply from 4.5V to 5.5V. A low power shutdown mode reduces supply current to 0.1 $\mu$ A.

The LTC1967 is packaged in the space-saving MSOP package, which is ideal for portable applications.

## Features

High Linearity:

0.02% Linearity Allows Simple System Calibration

Wide Input Bandwidth:

Bandwidth to 0.1% Additional Gain Error: 40kHz

Bandwidth Independent of Input Voltage Amplitude

No-Hassle Simplicity:

True RMS-DC Conversion with Only One External Capacitor

Delta Sigma Conversion Technology

Low Supply Current:

330 $\mu$ A Typ

Ultralow Shutdown Current:

0.1 $\mu$ A

Flexible Inputs:

Differential or Single Ended

Rail-to-Rail Common Mode Voltage Range

Up to 1VPEAK Differential Voltage

Flexible Output:

Rail-to-Rail Output

Separate Output Reference Pin Allows Level Shifting

Small Size:

Space Saving 8-Pin MSOP Package

## Related Products



[LT3763EFE](#)

Analog Devices, Inc  
TSSOP28



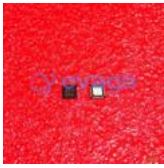
[LT1038CK](#)

Analog Devices, Inc  
TO-3

## Application

True RMS Digital Multimeters and Panel Meters

True RMS AC + DC Measurements



[LTC4417IUF](#)

Analog Devices, Inc  
QFN-24



[LTC3440EMS](#)

Analog Devices, Inc  
MSOP10



[LTC1966CMS8#PBF](#)

Analog Devices, Inc  
MSOP-8P



[LTC2990IMS#PBF](#)

Analog Devices, Inc  
10MSOP



[LTM8045EY#PBF](#)

Analog Devices, Inc  
BGA40



[LT4295IUFD#PBF](#)

Analog Devices, Inc  
28-WFQFN