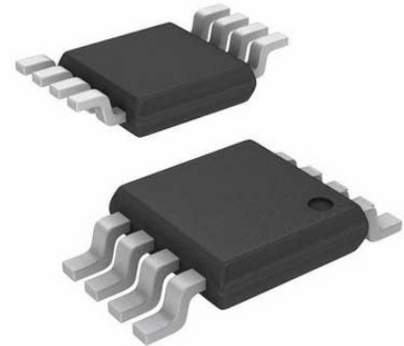


## Voltage & Current References MICRO POWER 5VOLT REF IC

Manufacturers	<a href="#">Analog Devices, Inc</a>
Package/Case	8-TSSOP (0.173, 4.40mm Width)
Product Type	Power Management ICs
RoHS	Rohs
Lifecycle	



Images are for reference only

Please submit RFQ for REF198GRUZ or [Email to us: sales@ovaga.com](mailto:sales@ovaga.com) We will contact you in 12 hours.

[RFQ](#)

## General Description

The REF19x series is made up of micropower, low dropout voltage (LDV) devices, providing stable output voltage from supplies as low as 100 mV above the output voltage and consuming less than 45  $\mu$ A of supply current. In sleep mode, which is enabled by applying a low TTL or CMOS level to the SLEEP pin, the output is turned off and supply current is further reduced to less than 15  $\mu$ A.

The REF19x series references are specified over the extended industrial temperature range ( $-40^{\circ}\text{C}$  to  $+85^{\circ}\text{C}$ ) with typical performance specifications over  $-40^{\circ}\text{C}$  to  $+125^{\circ}\text{C}$  for applications, such as automotive.

All electrical grades are available in an 8-lead SOIC package; the PDIP and TSSOP packages are available only in the lowest electrical grade.

## Features

Initial Accuracy:  $\pm 2$  mV Max

Temperature Coefficient: 5 ppm/ $^{\circ}$ C Max

Low Supply Current: 45  $\mu$ A Max

Sleep Mode: 15  $\mu$ A Max

Low Dropout Voltage

Load Regulation: 4 ppm/mA

Line Regulation: 4 ppm/V

High Output Current: 30 mA

Short-Circuit Protection

## Application

Portable instruments

ADCs and DACs

Smart sensors

Solar powered applications

Loop-current-powered instruments

## Related Products



### [REF02CPZ](#)

Analog Devices, Inc  
DIP8



### [REF192GRUZ](#)

Analog Devices, Inc  
TSSOP-8



### [ADP5071AREZ](#)

Analog Devices, Inc  
TSSOP-20



### [REF198ESZ](#)

Analog Devices, Inc  
SOIC-8



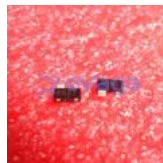
### [ADP3336ARMZ-REEL7](#)

Analog Devices, Inc  
MSOP-8



### [REF192FSZ](#)

Analog Devices, Inc  
SOIC-8



### [ADM811TARTZ-REEL7](#)

Analog Devices, Inc  
SOT23



### [AD1580BRTZ-REEL7](#)

Analog Devices, Inc  
SOT-23