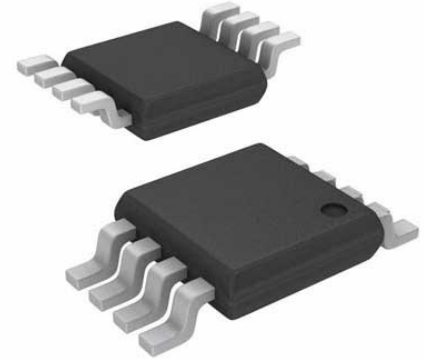


Processor Supervisor 3.118V/2.363V/Adj 3 Active High/Active Low/Open Drain/CMOS 8-Pin MSOP Tube

Manufacturers	Analog Devices, Inc
Package/Case	MSOP-8
Product Type	Supervisors
RoHS	Pb-free Halide free
Lifecycle	



Images are for reference only

Please submit RFQ for LTC1326CMS8#PBF or [Email to us: sales@ovaga.com](mailto:sales@ovaga.com) We will contact you in 12 hours.

[RFQ](#)

General Description

The LTC1326/LTC1326-2.5 are triple supply monitors intended for systems with multiple supply voltages. They provide micropower operation, small size and high accuracy supply monitoring.

Tight 0.75% threshold accuracy and glitch immunity ensure reliable reset operation without false triggering. The 20 μ A typical supply current makes the LTC1326/LTC1326-2.5 ideal for power-conscious systems.

The RST output is guaranteed to be in the correct state for VCC3, VCC5 or VCC25 down to 1V. The LTC1326/LTC1326-2.5 can be configured to monitor one, two or three inputs, depending on system requirements.

A manual push-button reset input provides the ability to generate a very narrow “soft” reset pulse (100 μ s typ) or a 200ms reset pulse equivalent to a power-on reset. Both SRST and RST outputs are open-drain and can be OR-tied with other reset sources.

Features

Simultaneously Monitors Three Supplies

LTC1326: 5V, 3.3V and ADJ

LTC1326-2.5: 2.5V, 3.3V and ADJ

Guaranteed Threshold Accuracy: $\pm 0.75\%$

Low Supply Current: 20 μ A

Internal Reset Time Delay: 200ms

Manual Push-Button Reset Input

Active Low and Active High Reset Outputs

Active Low "Soft" Reset Output

Power Supply Glitch Immunity

Guaranteed RESET for $VCC3 \geq 1V$ or $VCC5 \geq 1V$ or $VCC25 \geq 1V$

8-Pin SO and MSOP Packages

Application

Desktop Computers

Notebook Computers

Intelligent Instruments

Portable Battery-Powered Equipment

Related Products



[LT3763EFE](#)

Analog Devices, Inc
TSSOP28



[LT1038CK](#)

Analog Devices, Inc
TO-3



[LTC4417IUF](#)

Analog Devices, Inc
QFN-24



[LTC3440EMS](#)

Analog Devices, Inc
MSOP10



[LTC1966CMS8#PBF](#)

Analog Devices, Inc
MSOP-8P



[LTC2990IMS#PBF](#)

Analog Devices, Inc
10MSOP



[LTM8045EV#PBF](#)

Analog Devices, Inc
BGA40



[LT4295IUFD#PBF](#)

Analog Devices, Inc
28-WFQFN