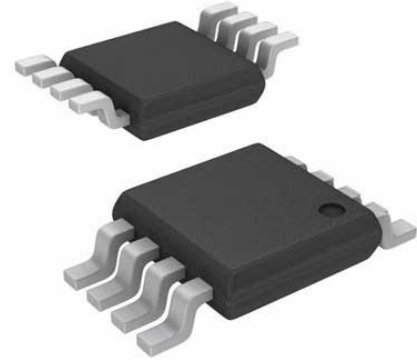


IC REG BOOST INV SEPIC 2A 8MSOP

Manufacturers	Analog Devices, Inc
Package/Case	MSOP-8
Product Type	Power Management ICs
RoHS	Pb-free Halide free
Lifecycle	



Images are for reference only

Please submit RFQ for LT3580EMS8E#TRPBF or [Email to us: sales@ovaga.com](mailto:sales@ovaga.com) We will contact you in 12 hours.

[RFQ](#)

General Description

The LT3580 is a PWM DC/DC converter containing an internal 2A, 42V switch. The LT3580 can be configured as either a boost, SEPIC or inverting converter. Capable of generating 12V at 550mA or -12V at 350mA from a 5V input, the LT3580 is ideal for many local power supply designs.

The LT3580 has an adjustable oscillator, set by a resistor from the RT pin to ground. Additionally, the LT3580 can be synchronized to an external clock. The free running or synchronized switching frequency range of the part can be set between 200kHz and 2.5MHz.

The LT3580 also features innovative SHDN pin circuitry that allows for slowly varying input signals and an adjustable undervoltage lockout function.

Additional features such as frequency foldback and soft-start are integrated. The LT3580 is available in tiny 3mm × 3mm 8-lead DFN and 8-lead MSOP packages.

Features

2A Internal Power Switch

Adjustable Switching Frequency

Single Feedback Resistor Sets VOUT

Synchronizable to External Clock

High Gain SHDN Pin Accepts Slowly Varying Input Signals

Wide Input Voltage Range: 2.5V to 32V

Low VCESAT Switch: 300mV at 1.5A (Typical)

Integrated Soft-Start Function

Easily Configurable as a Boost or Inverting Converter

User Configurable Undervoltage Lockout (UVLO)

Tiny 8-Lead 3mm × 3mm DFN and 8-Lead MSOP Packages

Application

VFD Bias Supplies

TFT-LCD Bias Supplies

GPS Receivers

DSL Modems

Local Power Supply

Related Products



[LT3763EFE](#)

Analog Devices, Inc
TSSOP28



[LTC4417IUF](#)

Analog Devices, Inc
QFN-24



[LTC1966CMS8#PBF](#)

Analog Devices, Inc
MSOP-8P



[LTM8045EY#PBF](#)

Analog Devices, Inc
BGA40



[LT1038CK](#)

Analog Devices, Inc
TO-3



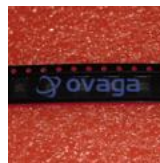
[LTC3440EMS](#)

Analog Devices, Inc
MSOP10



[LTC2990IMS#PBF](#)

Analog Devices, Inc
10MSOP



[LT4295IUFD#PBF](#)

Analog Devices, Inc
28-WFQFN