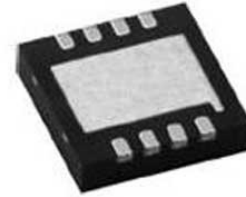


EMI Filter 30dB 0.1A Flat Style SMD T/R

Manufacturers	ON Semiconductor, LLC
Package/Case	WDFN
Product Type	EMI/RFI Components
RoHS	Green
Lifecycle	



Images are for reference only

Please submit RFQ for SZEMI2121MTTAG or [Email to us: sales@ovaga.com](mailto:sales@ovaga.com) We will contact you in 12 hours.

[RFQ](#)

General Description

The EMI2121 is an integrated common mode filter providing both ESD protection and EMI filtering for high speed serial digital interfaces such as USB2.0. The EMI2121 provides EMI filtering for one differential data line pair and ESD protection for one data pair plus a supply input such as USB2.0 Vbus or USB ID pin. It is supplied in a small RoHS compliant WDFN8 package.

Features

Highly Integrated Common Mode Filter (CMF) with ESD Protection provides protection and EMI Reduction for systems using high speed Serial Data Lines with cost and space savings over Discrete Solutions

Integration of ESD and Filter function

Large Differential Mode Bandwidth with Cutoff Frequency > 2 GHz

Rejects cellular transmit frequencies

High Common Mode Stop Band Attenuation: >25 dB at 700 MHz, >30 dB at 800 MHz Typical

Rejects cellular transmit frequencies

Provides ESD Protection to IEC61000-4-2 Level 4, 12 kV Contact Discharge

High level ESD protection

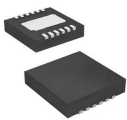
Low Channel Input Capacitance Provides Superior Impedance Matching

Low capacitive loading

Application

ONSEMI

Related Products



[SZNUF6401MNWT1G](#)

ON Semiconductor, LLC
DFNW-12



[SZNUF4403MNT1G](#)

ON Semiconductor, LLC
DFN-8



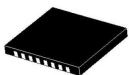
[NUF2042XV6T1G](#)

ON Semiconductor, LLC
SOT-563



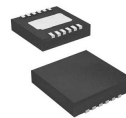
[STF202-22T1G](#)

ON Semiconductor, LLC
6TSOP



[NUF8402MNT4G](#)

ON Semiconductor, LLC
DFN-16, 4 x 1.6



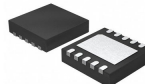
[NUF6400MNTBG](#)

ON Semiconductor, LLC
DFN-12



[NUF4220MNT1G](#)

ON Semiconductor, LLC
DFN-8



[NUF4001MUT2G](#)

ON Semiconductor, LLC
UDFN8