

32bit Cortex M4 Microcontroller, 120MHz, 512 kB Flash, 100-Pin LQFP

Manufacturers	Infineon Technologies Corporation
Package/Case	100-LQFP
Product Type	Embedded Processors & Controllers
RoHS	
Lifecycle	



Images are for reference only

Please submit RFQ for XMC4400F100K512BAXQMA1 or [Email to us: sales@ovaga.com](mailto:sales@ovaga.com) We will contact you in 12 hours.

[RFQ](#)

General Description

XMC4400 combines Infineon's leading-edge peripheral set with an industry-standard ARM® Cortex™-M4. As one of its key features it offers a high-resolution PWM unit with a tiny resolution of 150ps. This unique peripheral makes it especially suitable for digital power conversion in applications like solar inverters as well as SMPS and uninterruptible power supplies (UPS). Other applications are motor controllers, sense&control and IO devices for factory automation and user interface systems (HMI). XMC4400 is supported by Infineon's integrated development platform DAVE™ 4, which makes convenient, fast and application-orientated software development possible.

Features Application

ARM® Cortex™-M4, 120MHz, incl. single cycle DSP	System cost down: Inverters manufacturers will continuously optimize the price per output power on system level. System efficiency: Efficiency is key for return of investment.
MAC and floating point unit (FPU)	Reliability: 5+years lifetime for string inverters and 25 years for micro inverter and optimizer.
8-channel DMA + dedicated DMAs for USB and Ethernet	Switched mode power supplies: Power supply designs are subject to ever-increasing requirements. Some of them are fueled by customer demands or industry association guidelines (such as higher power density, communication, modularity or the 80 Plus Titanium efficiency standard). Semiconductor technology advances have allowed MCU manufacturers to develop a new class of MCUs, optimized for digital power conversion applications in terms of features and price point. This new market development his what motivates ever more power supply designers to use digital control for SMPS.
USIC 4ch [Quad SPI, SCI/UART, PC, PS, LIN]	Some functionalities that makes XMC4200 suited to motor control application:
Supply voltage range: 3.13 - 3.63V	Rich connectivity: 2x Can nodes, 4-channel serial COM unit unit (configurable to SPI, P _c , P _S , UART), USB FS.
USB 2.0 full-speed on-the-go	UP to 4X 12-bit ADC with a sample time of 70 ns ensure fast reaction times and tighter control loops. 4-channel 150 ps HRPWM timer (XMC4200/4400 series)
CPU Frequency: 120MHz	
Peripherals Clock: 120 [MHZ]	
eFlash: 512kB including hardware ECC	
80kB SRAM	
10/100 Ethernet MAC (/w IEEE 1588)	
2x CAN, 64 MO	
Package: PG-LQFP-100	
4x ΔΣ-Demodulator	
Temperature range: range: -40°... 125°	

Related Products



[XMC4500F100K1024ACXOSA1](#)

Infineon Technologies Corporation
100-LQFP



[XMC4500F144F1024ACXQMA1](#)

Infineon Technologies Corporation
144-LQFP



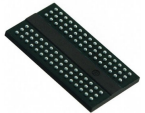
[XMC4300F100F256AAXQMA1](#)

Infineon Technologies Corporation
100-LQFP



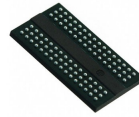
[XMC4800E196K2048AAXQMA1](#)

Infineon Technologies Corporation
196-LFBGA



[XMC4700E196K2048AAXQMA1](#)

Infineon Technologies Corporation
196-LFBGA



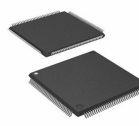
[XMC4500F144K1024ACXQMA1](#)

Infineon Technologies Corporation
144-LQFP



[XMC4700F144K2048AAXQMA1](#)

Infineon Technologies Corporation
144-LQFP



[XMC4300F100K256AAXQMA1](#)

Infineon Technologies Corporation
100-LQFP

