

CPLD XC9500 Family 1.6K Gates 72 Macro Cells 55.6MHz 0.5um Technology 5V 84Pin PLCC

Manufacturers	AMD Xilinx, Inc
Package/Case	PLCC-84
Product Type	Programmable Logic ICs
RoHS	
Lifecycle	



Images are for reference only

Please submit RFQ for XC9572-15PC84C or [Email to us: sales@ovaga.com](mailto:sales@ovaga.com) We will contact you in 12 hours.

[RFQ](#)

General Description

XC9572-15PC84C is a type of Complex Programmable Logic Device (CPLD) manufactured by Xilinx Inc. It is a member of the Xilinx XC9500 series of CPLDs and is designed for high-performance logic integration and implementation.

Features

Maximum user gates: 72

Maximum flip-flops: 72

Maximum macrocells: 36

Maximum input/output pins: 68

Maximum operating frequency: 83 MHz

Operating voltage: 3.3 V

Package type: 84-pin Plastic Leaded Chip Carrier (PLCC)

Application

Digital signal processing

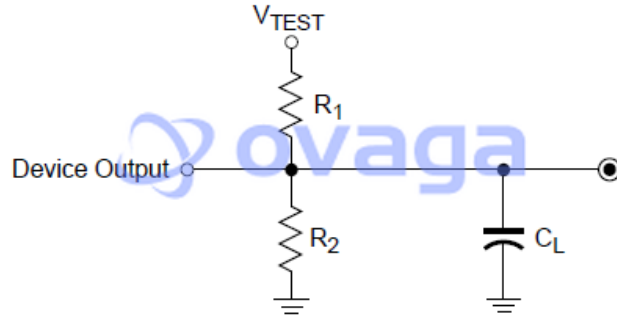
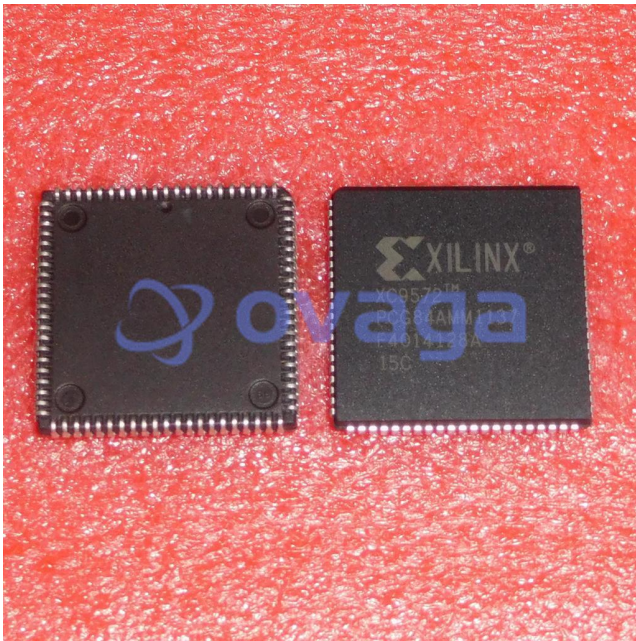
Communications

Industrial control

Automotive

Aerospace and defense

Consumer electronics



Related Products



[XCF18V01S020C](#)

AMD Xilinx, Inc
SOP-20



[XCF04SV0G20C](#)

AMD Xilinx, Inc
TSSOP20



[XC6SLX4-2CSG225C](#)

AMD Xilinx, Inc
BGA-225



[XCV50-6BG256C](#)

AMD Xilinx, Inc
BGA256



[XCF08PV0G48C](#)

AMD Xilinx, Inc
TSOP-48



[XC6SLX25-3FTG256C](#)

AMD Xilinx, Inc
BGA-256



[XC6SLX16-3CSG324C](#)

AMD Xilinx, Inc
BGA-324



[XCF32PVO48C](#)

AMD Xilinx, Inc
TSOP48