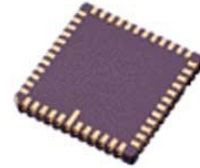


MEMS Accelerometer, Dual-Axis, PWM, X, Y,  $\pm 2g$ , 3 V, 5.25 V, LCC

Manufacturers	<a href="#">Analog Devices, Inc</a>
Package/Case	LCC-8
Product Type	Motion & Position Sensors
RoHS	Rohs
Lifecycle	



Images are for reference only

Please submit RFQ for ADXL212AEZ or [Email to us: sales@ovaga.com](mailto:sales@ovaga.com) We will contact you in 12 hours.

[RFQ](#)

## General Description

The ADXL212 is a high precision, low power, complete single- and dual-axis accelerometers with duty cycle modulated outputs, all on a single, monolithic IC. The ADXL212 measure acceleration with a full-scale range of  $\pm 2g$ . The ADXL212 can measure both dynamic acceleration (for example, vibration) and static acceleration (for example, gravity). The typical noise floor is  $110 \mu g/\sqrt{Hz}$ , allowing signals below  $1 mg$  ( $0.06^\circ$  of inclination) to be resolved in tilt sensing applications using narrow bandwidths ( $<60 Hz$ ). The user selects the bandwidth of the accelerometer using Capacitor CX and Capacitor CY at the XOUT and YOUT pins. Bandwidths of  $0.5 Hz$  to  $2.5 kHz$  may be selected to suit the application. The ADXL212 available in  $5 mm \times 5 mm \times 2 mm$ , 8-pad hermetic LCC packages.

## Features

High performance, single-/dual-axis accelerometer on a single IC chip Automotive tilt alarms

5 mm × 5 mm × 2 mm LCC package

1 mg resolution at 60 Hz Low power: 700 μA at >

High zero g bias stability

High sensitivity accuracy -40°C to +125°C temperature range

Pulse Width Modulated Digital Outputs

BW adjustment with a single capacitor

Single-supply operation

3500 g shock survival RoHS-compliant

Compatible with Sn/Pb- and Pb-free solder processes

## Application

Vehicle dynamic control (VDC)/electronic stability program (ESP) systems

Electronic chassis control

Electronic braking

Data projectors

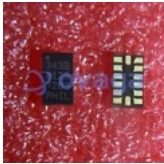
Navigation

Platform stabilization/leveling

Alarms and motion detectors

High accuracy, 2-axis tilt sensing

## Related Products



### [ADXL343BCCZ](#)

Analog Devices, Inc  
LGA-14



### [ADXL103CE](#)

Analog Devices, Inc  
CLCC-8



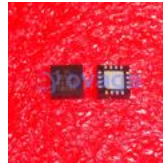
### [ADXRS642BBGZ](#)

Analog Devices, Inc  
CBGA-32



### [ADXL346ACCZ-RL7](#)

Analog Devices, Inc  
LGA16



### [ADXL335BCPZ-RL7](#)

Analog Devices, Inc  
LFCSP16



### [ADIS16488BMLZ](#)

Analog Devices, Inc  
MSM24



### [ADXL357BEZ](#)

Analog Devices, Inc  
LCC-14



### [ADXL345BCCZ-RL7](#)

Analog Devices, Inc  
LGA-14