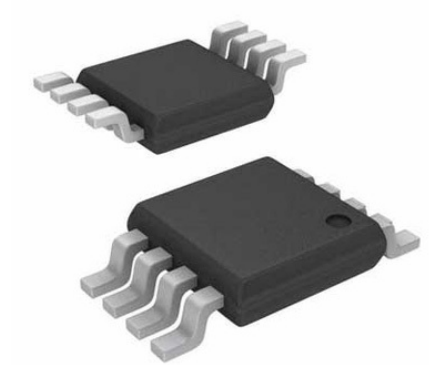


EEPROM Serial-SPI 512K-bit 64K x 8 2.5V/3.3V/5V Automotive 8-Pin TSSOP T/R

Manufacturers	<a href="#">STMicroelectronics, Inc</a>
Package/Case	TSSOP-8
Product Type	Memory
RoHS	Ecopack2
Lifecycle	



Images are for reference only

Please submit RFQ for M95512-DRDW3TP/K or [Email to us: sales@ovaga.com](mailto:sales@ovaga.com) We will contact you in 12 hours.

[RFQ](#)

## General Description

The M95512-DRDW3TP/K is likely a member of the STMicroelectronics M95 series EEPROMs, which are non-volatile memory components used for storing small amounts of data that need to be retained even when power is removed. They utilize the SPI protocol for communication and offer various capacities and features.

## Features

**Memory Capacity:** The M95 series typically offers different capacities, such as 512 kilobits (64 kilobytes) or higher, for data storage.

**SPI Interface:** They typically support the Serial Peripheral Interface (SPI) protocol, allowing for easy integration into various digital systems.

**Low Power Consumption:** M95 series EEPROMs are designed for low power consumption, making them suitable for battery-powered applications.

**Fast Read and Write Operations:** These EEPROMs offer fast read and write speeds for efficient data access and programming.

**Data Retention:** They provide high data retention, ensuring stored information is preserved for long periods.

**Sector Erase:** M95 series EEPROMs typically support sector erase operations, enabling efficient memory management and data updates.

**Write Protection:** Some EEPROMs may include write protection mechanisms to prevent accidental modification or erasure.

## Application

**Embedded Systems:** Used for storing configuration data, calibration values, or non-volatile variables in microcontrollers, microprocessors, or system-on-chip (SoC) designs.

**Consumer Electronics:** Employed in devices such as set-top boxes, home appliances, or industrial control panels for storing configuration settings or user-specific data.

**Automotive Electronics:** Found in automotive systems for storing configuration parameters, fault codes, or user preferences.

**Industrial Automation:** Utilized in industrial control systems, sensors, and equipment for storing calibration data, device-specific configuration, or operating parameters.

**Medical Devices:** Used in medical equipment and devices for storing critical data or settings.

## Related Products



### [M95320-WMN6TP](#)

STMicroelectronics, Inc  
SOIC-8



### [M93C66-WMN6TP](#)

STMicroelectronics, Inc  
SOIC-8



### [M95128-WMN6P](#)

STMicroelectronics, Inc  
SOIC-8



### [M95160-WMN6TP](#)

STMicroelectronics, Inc  
SOIC-8



### [M95256-WMN6TP](#)

STMicroelectronics, Inc  
SOIC-8



### [M95128-RMN6TP](#)

STMicroelectronics, Inc  
SOIC-8



### [M95128-RDW6TP](#)

STMicroelectronics, Inc  
TSSOP-8



### [M95256-WMW6TG](#)

STMicroelectronics, Inc  
SOIC-8