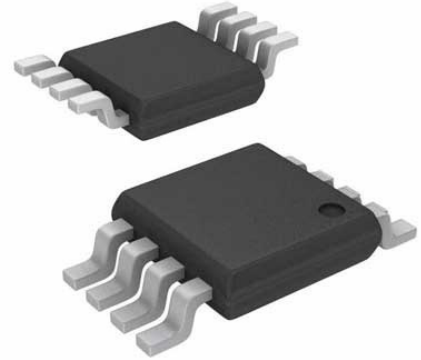


Linear Charge Management Li-Ion 1500mA 4.2V 8-Pin MSOP T/R

Manufacturers	Analog Devices, Inc
Package/Case	MSOP-8
Product Type	Power Management ICs
RoHS	Rohs
Lifecycle	



Images are for reference only

Please submit RFQ for ADP2291ARMZ-R7 or [Email to us: sales@ovaga.com](mailto:sales@ovaga.com) We will contact you in 12 hours.

[RFQ](#)

General Description

An external, low cost, PNP provides the charging current to the battery and an external resistor sets the maximum charge current. A small external capacitor programs the maximum charge time. The controller includes an LED driver to indicate the battery charging status.

Safety features include charging stop mode for battery faults, output overshoot protection, and thermal shutdown. The ADP2291 also features automatic reverse isolation, which does not require an additional blocking diode.

The multistep charge cycle optimizes the battery charging time in a safe manner. It features a trickle charge mode for a deeply discharged cell and a fast charging mode with a maximum current of 1.5 A. The ADP2291 controls the end of charge with a 4.2 V output voltage that is 1% accurate over line and temperature. It automatically recharges the battery if the cell voltage drops. When the input supply is removed, the part enters a low current state and reduces the current drawn from the battery to below 1 μ A.

The ADP2291 is available in both a small, 8-pin MSOP package and a 3 \times 3 mm LFCSP package that is ideally suited for small, portable applications.

Features

Simple, Safe Linear Charger for Single Cell Lithium Battery

4.5 V to 12 V Input Voltage Range

Adjustable Charging Current up to 1.5 A

Low Cost PNP External Pass Element

Automatic Reverse Isolation with No External Blocking Diode

Output Overshoot Protection

Deep Discharge Precharge Mode

Thermal Shutdown

Automatic Recharge

Programmable Termination Timer

LED Charging Status Indicator

4.2 V Output Voltage with $\pm 1\%$ Accuracy Over Line and Temperature.

Related Products



[ADP3336ARMZ-REEL7](#)

Analog Devices, Inc
MSOP-8



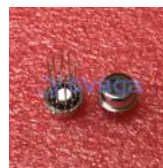
[AD737JRZ](#)

Analog Devices, Inc
SOP-8



[ADP3367ARZ](#)

Analog Devices, Inc
SOIC-8



[AD636JH](#)

Analog Devices, Inc
TO-100-10



[ADP3330ARTZ3.3-RL7](#)

Analog Devices, Inc
SOT-23-6



[ADR434BRZ](#)

Analog Devices, Inc
SOIC-8



[ADR421ARZ](#)

Analog Devices, Inc
SOP-8



[ADR3412ARJZ-R7](#)

Analog Devices, Inc
SOT-23-6